

# Specifications



Built 2000



Steel hull



23.9m



Hydrographic winch



9 knot service speed



14 day endurance



8 science crew  
4 ship's crew



Specialised equipment:

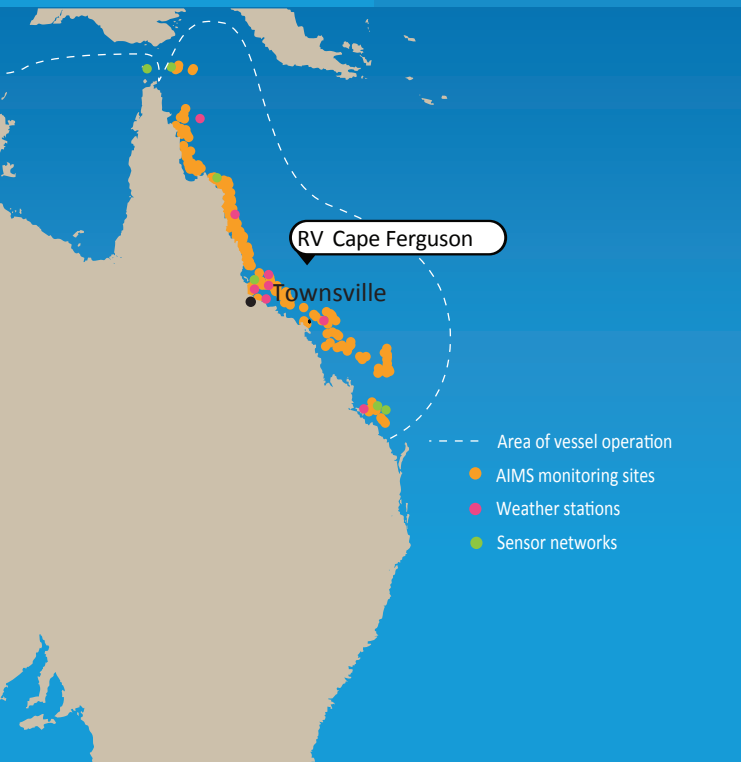


3 tenders (rigid inflatable boats)



Wet and dry laboratory

- Ultra-low temperature scientific freezers (-80°C)
- Fume Cabinet
- Thermosalinograph



# RV Cape Ferguson

The Great Barrier Reef's largest dedicated research vessel

## Where is the RV Cape Ferguson?

Track the *Cape Ferguson* on its voyages.

[bit.ly/2JmYMgw](https://bit.ly/2JmYMgw)

## About AIMS

The Australian Institute of Marine Science is Australia's tropical marine research agency. In existence for half a century, it plays a pivotal role in providing large-scale, long-term and world-class research that helps governments, industry and the wider community to make informed decisions about the management of Australia's marine estate. AIMS science leads to healthier marine ecosystems; economic, social and environmental benefits for all Australians; and protection of coral reefs from climate change.

Learn more about us at [aims.gov.au](http://aims.gov.au)



Australian Government

Connect with us:



1526 Cape Cleveland Road  
Cape Cleveland QLD 4810 Australia  
PMB 3 Townsville MC QLD 4810  
T: +61 7 4753 4444  
E: [reception@aims.gov.au](mailto:reception@aims.gov.au)



AUSTRALIAN INSTITUTE OF MARINE SCIENCE





## The work horse of the Reef

The research vessel *RV Cape Ferguson* is the work horse for the Australian Institute of Marine Science's Great Barrier Reef field research program. The 'Fergie' (as she is affectionately known) takes marine research to the remote tropical waters of Australia's North, steaming as much as 15,000 nautical miles, during 270 sea days a year.

The *Cape Ferguson* provides AIMS with the ocean-going access along the entire Great Barrier Reef to enable marine scientists to develop a comprehensive understanding of this iconic ecosystem's tropical marine biodiversity, oceanography and functions.



## Science in action

The *Cape Ferguson* takes our researchers from the Torres Strait in the north of the Reef, to the Capricorn-Bunker region in the south. The vessel supports AIMS' Long-Term Monitoring Program, the most comprehensive coral reef monitoring of an ecosystem in the world and essential decision-making data for governments and agencies involved in the management and protection of the Great Barrier Reef.

Many other scientific tasks are carried out on board this "floating laboratory", such as:

- collecting organisms to support studies on reproduction, husbandry and genetics
- field experiments targeting coral resilience and reef adaption and restoration techniques.

The *Cape Ferguson* also supports oceanographic research and is a testing platform for technology innovation, and robotics research and development.



## Supporting the health of Australia's tropical oceans

The *Cape Ferguson* is operated by a crew experienced in science support and conducts an average of 26 expeditions a year. Each voyage carries up to eight scientists lasting between seven and 14 days and travelling up to 3,000 nautical miles (5,550km).

Equipped with a suite of research facilities, including laboratories and deck equipment for deploying high tech instruments, the *Cape Ferguson* undertakes the science necessary to protect Australia's tropical oceans and support the sustainability of marine industries underpinning our "Blue Economy".

The *Cape Ferguson* is over 20 years old, and will be replaced this decade with a modern research vessel that incorporates hybrid propulsion, better sea-keeping and the latest technology platforms for integrated data collection. This will enable Australia to maintain its position as a global leader in tropical marine science.

